

# Asbestos Blockplan Sackett Building

**DO NOT PRINT THESE BLOCKPLANS AND ASSUME CHANGES NEVER OCCUR. UPDATES ARE CONSTANTLY BEING ADDED.**

**These blockplans DO NOT include the following asbestos containing materials:**

**Thermal insulations such as pipe, boiler, tank, or duct insulation; these are assumed to contain asbestos unless they are obviously fiberglass or foam rubber.**

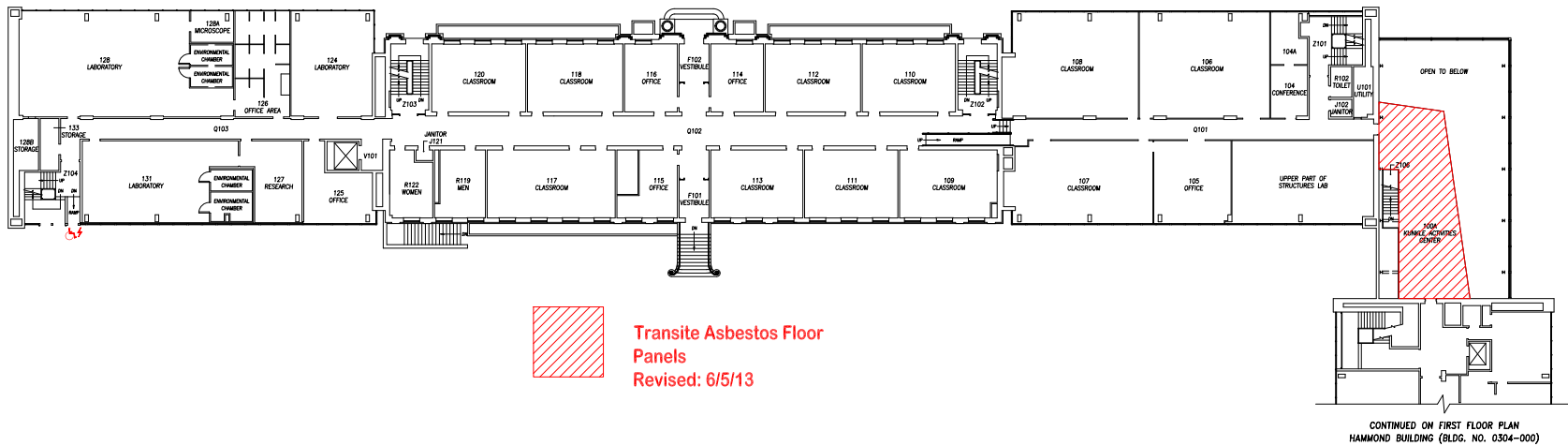
**ALL resilient floorings are also assumed to contain asbestos (i.e. 12"x12" and 9"x9" Floor Tile, Linoleum, etc.).**

**ALL Soapstone Lab Bench Tops are also assumed to contain asbestos.**

**Many of these materials are above drop ceilings and are not readily visible. Specific locations of these materials can be obtained by calling Environmental Health and Safety at 5-6391 (3-1111 after 5 P.M.).**



# Asbestos Blockplan



Call EHS (5-6391) BEFORE accessing above drop ceilings

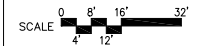
NOTE: Asbestos Pipe Insulation, Floor Tile and other Information can be found on the EHS Website: [www.ehs.psu.edu](http://www.ehs.psu.edu)

## SACKETT BUILDING

NEW BUILDING NAME  
FIRST FLOOR PLAN  
BUILDING FLOOR LEVEL  
UNIVERSITY PARK CAMPUS, UNIVERSITY PARK, PA  
NEW CAMPUS LOCATION



FACILITIES RESOURCES AND PLANNING  
THE PENNSYLVANIA STATE UNIVERSITY  
BENEDICT HOUSE  
UNIVERSITY PARK, PA 16802  
OFFICE: 814.865.1595 FAX: 814.865.1610 [www.facilities.psu.edu](http://www.facilities.psu.edu)



03/22/01 04/22/11  
CREATION DATE REVISION DATE

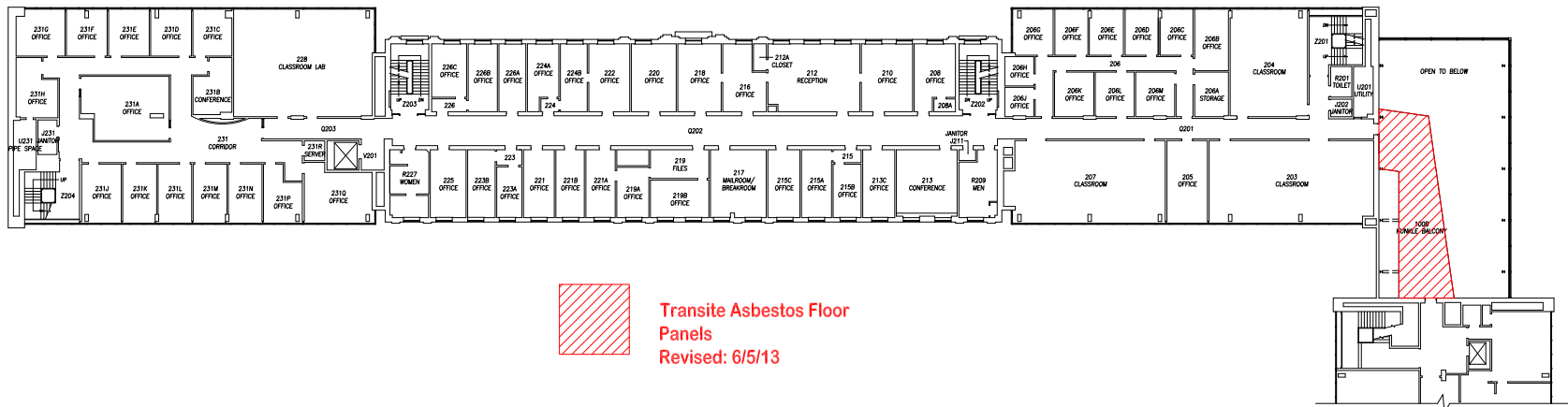
3 OF 6  
SHEET NUMBER  
1  
FLOOR LEVEL


0301-000  
BUILDING NUMBER

3 OF 6  
SHEET NUMBER  
1  
FLOOR LEVEL



# Asbestos Blockplan



 **Transite Asbestos Floor Panels**  
Revised: 6/5/13

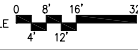
CONTINUED ON SECOND FLOOR PLAN  
HAMMOND BUILDING (BLDG. NO. 0304-000)

Call EHS (5-6391) BEFORE accessing above drop ceilings

NOTE: Asbestos Pipe Insulation, Floor Tile and other Information can be found on the EHS Website:  
[www.ehs.psu.edu](http://www.ehs.psu.edu)

**SACKETT BUILDING**  
NEW BUILDING NAME  
**SECOND FLOOR PLAN**  
BUILDING FLOOR LEVEL  
UNIVERSITY PARK CAMPUS, UNIVERSITY PARK, PA  
NEW CAMPUS LOCATION

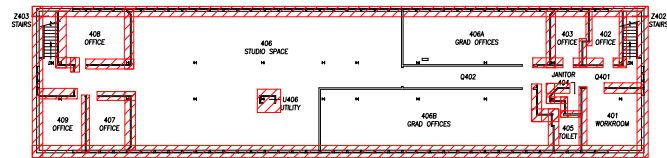
**PENNSTATE**  
FACILITIES RESOURCES AND PLANNING  
THE PENNSYLVANIA STATE UNIVERSITY  
BENEDICT HOUSE  
UNIVERSITY PARK, PA 16802  
OFFICE: 814.865.1595 FAX: 814.865.1610 [www.facilities.psu.edu](http://www.facilities.psu.edu)

SCALE   
03/22/01 CREATION DATE 04/22/11 REVISION DATE  
Campus block plans are for referential use only. Drawings are not to be used for architectural or engineering purposes.

**0301-000**  
BUILDING NUMBER  
4 OF 6  
SHEET NUMBER  
**2**  
FLOOR LEVEL



## Asbestos Blockplan



 Transite Asbestos Wall  
Panels in Corridors  
Revised: 6/5/13

Note: Asbestos Pipe Insulation, Floor  
Tile and other Information can be  
found on the EHS Website:  
[www.ehs.psu.edu](http://www.ehs.psu.edu)

Call EHS (5-6391) BEFORE accessing  
above drop ceilings

### SACKETT BUILDING

FOURTH FLOOR PLAN  
UNIVERSITY PARK CAMPUS, UNIVERSITY PARK, PA

PENNSYLVANIA STATE UNIVERSITY



FACILITIES RESOURCES AND PLANNING  
THE PENNSYLVANIA STATE UNIVERSITY  
BENEDICT HOUSE  
UNIVERSITY PARK, PA 16802  
OFFICE: 814.865.1595 FAX: 814.865.1610 [www.facilities.psu.edu](http://www.facilities.psu.edu)

SCALE 0 8' 16' 32'  
4' 12'

03/22/01 04/22/11  
CREATED DATE REVISION DATE

Campus block plans are for referential use  
only. Drawings are not to be used for  
architectural or engineering purposes.

0301-000

BUILDING NUMBER

6 OF 6

SHEET NUMBER

4

FLOOR LEVEL