

# Asbestos Blockplan Pattee / Paterno Library

**DO NOT PRINT THESE BLOCKPLANS AND ASSUME CHANGES NEVER OCCUR. UPDATES ARE CONSTANTLY BEING ADDED.**

**These blockplans DO NOT include the following asbestos containing materials:**

**Thermal insulations such as pipe, boiler, tank, or duct insulation; these are assumed to contain asbestos unless they are obviously fiberglass or foam rubber.**

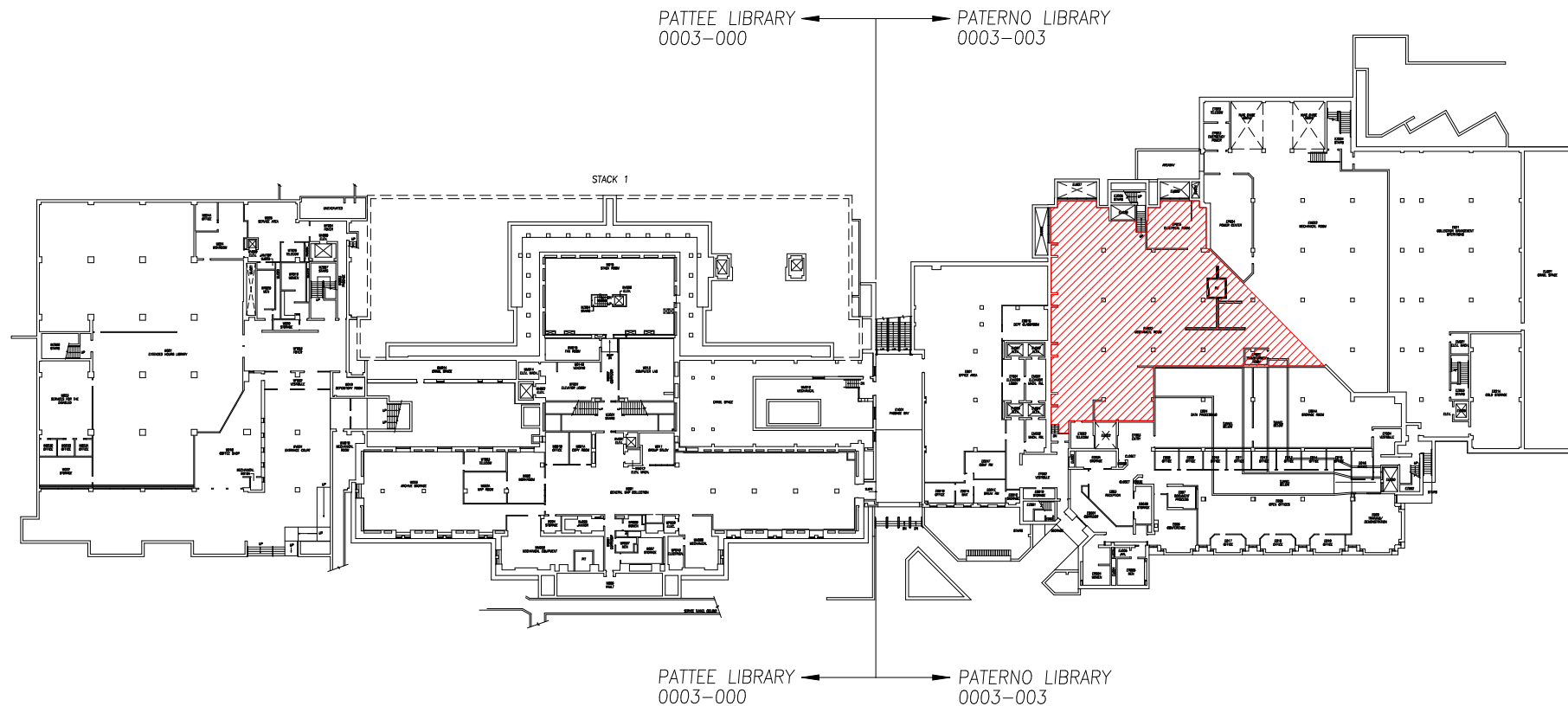
**ALL resilient floorings are also assumed to contain asbestos (i.e. 12"x12" and 9"x9" Floor Tile, Linoleum, etc.).**

**ALL Soapstone Lab Bench Tops are also assumed to contain asbestos.**

**Many of these materials are above drop ceilings and are not readily visible. Specific locations of these materials can be obtained by calling Environmental Health and Safety at 5-6391 (3-1111 after 5 P.M.).**



# Asbestos Blockplan



**Asbestos Note: Ceiling Patching Assumed to Contain Asbestos. Call EHS (5-6391) to confirm. Revised: 1/23/13**

**NOTE: Asbestos Pipe Insulation, Floor Tile and other Information can be found on the EHS Website: [www.ehs.psu.edu](http://www.ehs.psu.edu)**



**Spray-on Asbestos Fireproofing / Overspray Revised: 1/23/13**

## PATTEE LIBRARY

**BASEMENT FLOOR PLAN**  
UNIVERSITY PARK CAMPUS, UNIVERSITY PARK, PA

## PENNSTATE



**FACILITIES RESOURCES AND PLANNING**  
THE PENNSYLVANIA STATE UNIVERSITY  
BENEDICT HOUSE  
UNIVERSITY PARK, PA 16802  
OFFICE: 814.865.1995 FAX: 814.865.1610 [www.facilities.psu.edu](http://www.facilities.psu.edu)

SCALE 0 10' 20' 40'  
5 15

11/08/98 6/10/10

Consult block plans are for referential use only. Drawings are not to be used for architectural or engineering purposes.

**0003-000**

1 OF 9

**B**