

# Asbestos Blockplans Kern Building

**DO NOT PRINT THESE BLOCKPLANS AND ASSUME CHANGES NEVER OCCUR. UPDATES ARE CONSTANTLY BEING ADDED.**

**These blockplans DO NOT include the following asbestos containing materials:**

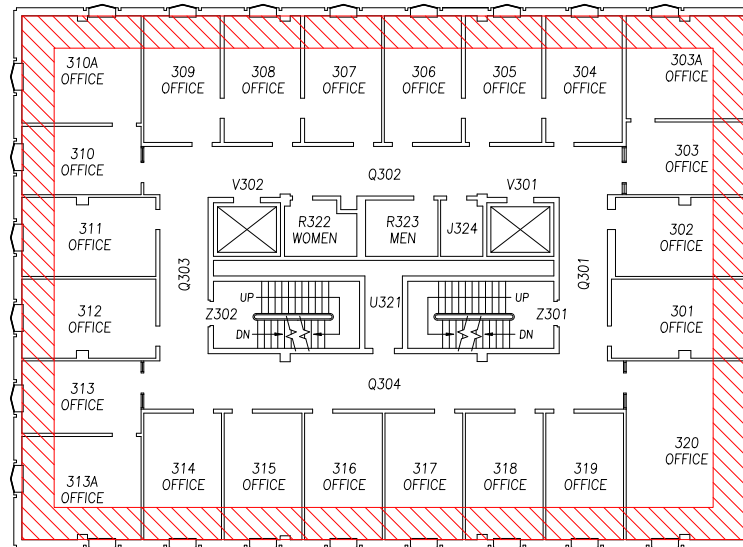
**Thermal insulations such as pipe, boiler, tank, or duct insulation; these are assumed to contain asbestos unless they are obviously fiberglass or foam rubber.**

**ALL resilient floorings are also assumed to contain asbestos (i.e. 12"x12" and 9"x9" Floor Tile, Linoleum, etc.).**

**ALL Soapstone Lab Bench Tops are also assumed to contain asbestos.**

**Many of these materials are above drop ceilings and are not readily visible. Specific locations of these materials can be obtained by calling Environmental Health and Safety at 5-6391 (3-1111 after 5 P.M.).**

# Asbestos Blockplan



**Spray-on Asbestos**  
**Fireproofing / Overspray**  
 Revised: 5/8/13

**Call EHS (5-6391) BEFORE accessing**  
**above drop ceilings**

**NOTE: Asbestos Pipe Insulation, Floor**  
**Tile and other Information can be**  
**found on the EHS website:**  
<http://www.ehs.psu.edu/>

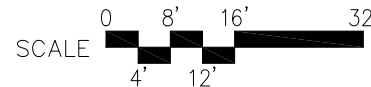
**KERN GRADUATE BUILDING**

**THIRD FLOOR PLAN**  
 UNIVERSITY PARK CAMPUS, UNIVERSITY PARK, PA

**PENNSTATE**



**FACILITIES RESOURCES AND PLANNING**  
 THE PENNSYLVANIA STATE UNIVERSITY  
 BENEDICT HOUSE  
 UNIVERSITY PARK, PA 16802  
 OFFICE: 814.865.1595 FAX: 814.865.1610 [www.facilities.psu.edu](http://www.facilities.psu.edu)



03/10/97  
 08/19/11

0452-000  
 4 OF 8  
 3

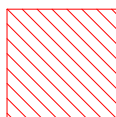
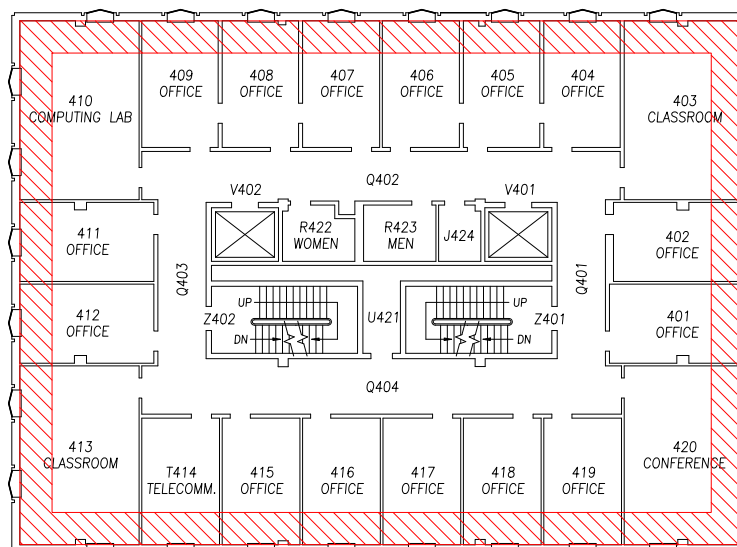
0452-000

4 OF 8

3

0452-000  
 4 OF 8  
 3

# Asbestos Blockplan



**Spray-on Asbestos  
Fireproofing / Overspray**  
Revised: 5/8/13

**Call EHS (5-6391) BEFORE accessing  
above drop ceilings**

**NOTE: Asbestos Pipe Insulation, Floor  
Tile and other Information can be  
found on the EHS website:  
<http://www.ehs.psu.edu/>**

## KERN GRADUATE BUILDING

FOURTH FLOOR PLAN

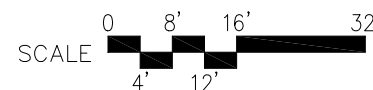
UNIVERSITY PARK CAMPUS, UNIVERSITY PARK, PA

## PENNSTATE



FACILITIES RESOURCES AND PLANNING  
THE PENNSYLVANIA STATE UNIVERSITY  
BENEDICT HOUSE  
UNIVERSITY PARK, PA 16802

OFFICE: 814.865.1595 FAX: 814.865.1610 [www.facilities.psu.edu](http://www.facilities.psu.edu)



03/10/97

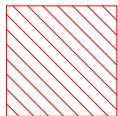
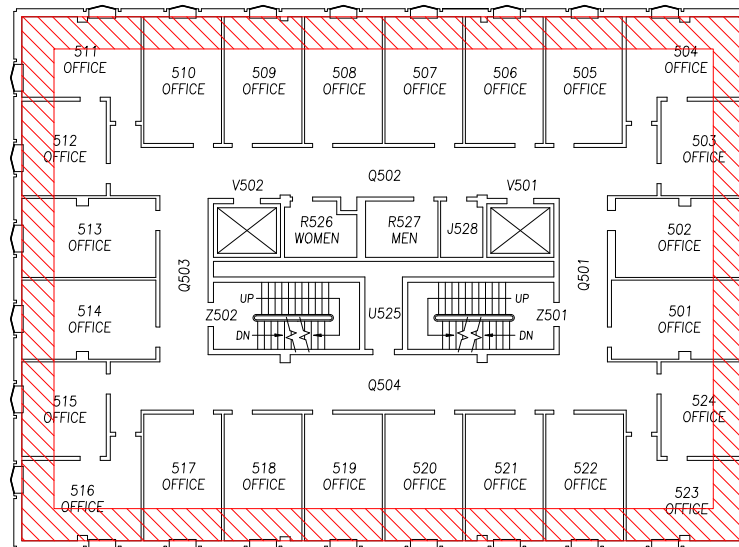
08/19/11

These block plans are for  
referential use only. Drawings are  
not to be used for architectural  
engineering purposes.

0452-000

5 OF 8

4



**Spray-on Asbestos  
Fireproofing / Overspray**  
Revised: 5/8/13

**Call EHS (5-6391) BEFORE accessing  
above drop ceilings**

**NOTE: Asbestos Pipe Insulation, Floor  
Tile and other Information can be  
found on the EHS website:  
<http://www.ehs.psu.edu/>**

**KERN GRADUATE BUILDING**

**FIFTH FLOOR PLAN**

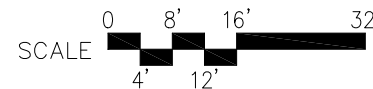
UNIVERSITY PARK CAMPUS, UNIVERSITY PARK, PA

**PENNSTATE**



**FACILITIES RESOURCES AND PLANNING**  
THE PENNSYLVANIA STATE UNIVERSITY  
BENEDICT HOUSE  
UNIVERSITY PARK, PA 16802

OFFICE: 814.865.1595 FAX: 814.865.1610 [www.facilities.psu.edu](http://www.facilities.psu.edu)



03/10/97  
08/19/11

These block plans are for  
referential use only. Drawings are  
not to be used for architectural  
engineering purposes.

**0452-000**

**6 OF 8**

**5**